



**dedect**  
 Department:  
 Economic Development, Environment,  
 Conservation and Tourism  
 North West Provincial Government  
 REPUBLIC OF SOUTH AFRICA

# TOURISM PRODUCTS

NORTH WEST DEPARTMENT OF  
 ECONOMIC DEVELOPMENT, ENVIRONMENT,  
 CONSERVATION AND TOURISM

HEAD OFFICE:  
 Development House / NWDC Building  
 Cnr Provident and University Drive  
 Mmabatho, 2735

Tel: 018 388 5965/5966/5964  
[www.dedect.nwpg.gov.za](http://www.dedect.nwpg.gov.za)  
[dedect@nwpg.gov.za](mailto:dedect@nwpg.gov.za)  
 @nwdedect  
 @NWPG\_DEDECT



# NGAKA MODIRI MOLEMA

## Botsalano Nature Reserve

Botsalano Nature Reserve situated between Zeerust and Mafikeng close to the Ramatlabama border. Is a breeding place for white rhino and antelopes. It has a bird list of well over 200 bird species. Botsalano Nature Reserve is also the site of one of oldest volcanic craters.



## Mafikeng Game Reserve

It is located in the town of Mahikeng. It hosts a variety of antelopes and bird species. This is a home to the white rhino.



## Mahikeng Museum

Housed in an ornate old building dating back to 1902, the Mafikeng Museum offers some interesting and diverse displays that take in all of the above. A retired steam locomotive outside the museum, as well as displays of prehistoric artifacts will appeal to children and adults, and displays concentrating on Tswana culture and history tell interesting stories of the heritage and history of the region's people.



## Groot Marico

The Art Factory in Groot Marico is a well-known landmark in the small North West town. For it is here, in a sprawling old homestead on the main street, that members of the local community have been producing beautiful, culturally inspired arts and crafts for nearly 20 years. The battlefield tours allow kids and adults to have up-close-and-personal experiences in the great outdoors. Herman Charles Bosman Literary Society. The Herman Charles Bosman Literary Society aims to be a rallying point for the friends of Bosman and the Groot-Marico, scattered throughout the wide world out there, and to making the region more accessible to those, whose curiosity had been aroused through Bosman's Marico stories. We wish our Society to answer the purpose of a double celebration: commemorative of a great poet who had immortalised the Marico and its people, and simultaneously celebrating this unique place that had served as such a tremendous and enduring source of inspiration to him. Madikwena Croc Inn, watch the crocodiles while you dine on the deck at the Croc Inn, licensed pub restaurant.



## Madikwe Game Reserve

It is regarded as a hidden-gem because it is regarded as one of the lesser known park in the country, it is also regarded as one of the best conservation areas in Africa and offers the Big 5 in a 680 km<sup>2</sup> park (750 km<sup>2</sup> including newly incorporated privately owned land). Malaria free game reserve, caters mainly to the affluent local and international guests, it has world class accommodation establishments/ lodges.



## Barberspan Bird Sanctuary

This is a perfect destination for bird lovers. Over 365 bird species, including migratory birds have been recorded in this bird sanctuary. Regarded as one of the largest waterfowl sanctuaries in Southern Africa, Barberspan Bird Sanctuary is a huge 2000 hectare body of water that is RAMSAR Convention-accredited, indicating its international importance for migratory birds and waterfowl.

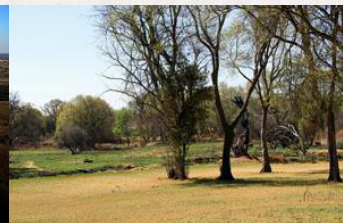


## Lichtenburg Game Breeding Centre

The breeding centre is operated by the National Zoological Gardens of South Africa, and is there mainly to further the breeding programmes of endangered species already in place by the National Zoo, and to supplement the populations of local and international zoos. The close to 6 000 hectare reserve breeds unusual animals such as the addax, scimitar-horned and Arabian oryx, and the mohrr gazelle, and you will find the remarkable pygmy hippo and Pere David's deer in the wetland area.

## Molemame Eye Nature Reserve

This petite nature reserve is a great place to bring the family and enjoy the nature around you. The centre of the reserve is a natural well with half of the water filtering into a dam and the rest turning a water wheel which keeps an old mill working. The Mill is a great place to visit and is also a national monument. The Dam is a great place to pitch your tents alongside for an outstanding camping experience.



# DR. RUTH MOMPATI DISTRICT

## Swartfontein & Leon Taljaard Nature Reserve

This is a nature reserve in the heart of Vryburg that offers Chalets and 100 Caravan/Camping sites with electrical points and ablution facilities. It is regarded as a local playground for bird-watching and game-viewing.



## Molopo Game Reserve

Molopo Game Reserve is a 24 000 hectare game reserve set right up against the Botswana border in the far western corner of the North West province. The Molopo Game reserve promises flourishing herds of wildebeest, gemsbok, eland, red hartebeest, kudu, zebra, waterbuck, springbok, duiker, and even the warthog puts in an appearance. On the predator's list you'll find the cheetah, hyena, caracal, the African wildcat, honey badger and black-backed jackal. The fossilized Phepane River bed, which can also be explored, is another special feature of the park.



## Taung Heritage Site

The Taung Heritage Site is situated at the quarry and remains an area of enormous archaeological importance. The region gained acclaim when a child's fossilized skull was found at the Buxton Quarry in 1924 by Professor Dart. This was named *Australopithecus Africanus*, which translates to "the southern ape of Africa". The Blue Pools, surrounded by caves and waterways are situated nearby, and provide the idyllic spot for a picnic or barbecue against the backdrop of some of Africa's most spectacular limestone valleys.



## Bloemhof Dam Nature Reserve

The Bloemhof Dam, which lies roughly 320 kilometers from Johannesburg just outside the little town of Bloemhof, is regarded as one of the largest dams in South Africa covering an area of 25 000 hectares that lies at the confluence of the Vaal and Vet Rivers. Bloemhof is one of the angling destinations in the country, extremely popular with fishermen of all shapes and sizes and the site of both major local and international angling competitions. Consisting of mostly Kalahari scrub and thornveld, the reserve's open plains are also home to large herds of black wildebeest, eland, springbok and gemsbok and over 250 species of birdlife have been recorded here. The Bloemhof dam supports more than 5000 waterbirds and one particular count registered over 10 000 individuals.



## SA Lombard Nature Reserve

It is one of the earliest wildlife conservation research centres in the country, the SA Lombard Nature Reserve is the park credited with saving the black wildebeest from extinction in the wild, and whilst it is not open to the public, there are a couple of guest houses that serve as accommodation in this beautiful, and consequently peaceful nature reserve. The reserve is fundamentally Kalahari grassland on an uncharacteristic flood plain, with virtually no trees, making game viewing particularly easy, and bird life here is prolific.



# DR. KENNETH KAUNDA DISTRICT

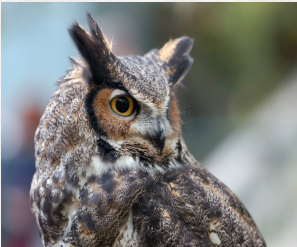
## Wolwespruit Nature Reserve

The Wolwespruit Nature Reserve lies on the Vaal River about 130 kilometers upstream from the Bloemhof Dam and 22 km south of Leeudoringsstad, a little town named after a type of thorn bush that was prevalent in the area in the 1920s, when the town came into existence south east of Wolmaraanstad. Wolwespruit is one of the least known of the parks in the North West province, possibly because of its size - it isn't large by any means, only 2330 hectares. The quiet and solitude that this affords bird watchers, attracted here for the myriad birding opportunities, makes it that much more attractive, particularly when there are opportunities to spot the thrush, starling and shrike. Wolwespruit Nature Reserve is an incredibly scenic reserve with pretty riverine bush, well known among the angling fraternity for the available yellowfish in the rapids of the Vaal. It is also popular with hikers - the dam conserves riverine vegetation in natural surroundings providing scenic trails, and the grassy plains are home to a number of antelope, including the once endangered black wildebeest, kudu and zebra, which adds to the excitement of the trail.



## Faan Meintjies Nature Reserve

Faan Meintjies reserve provides a true bushveld experience just a few kilometers from the city, and only 170 kilometers from Johannesburg, and is easily done in a day. Faan Meintjies Nature Reserve often forms part of a bird spotting tour and is regarded as a place for 'serious' birding. It helps that there are two loops of well-maintained roads and three seasonal dams in the reserve, so that accessing both the birds and the 30 odd species of wildlife resident in the reserve is relatively easy. Special birds to look out for include the Gabar goshawk, the chestnut backed finchlark, melodious lark and Kalahari robin, whilst night birds include the spotted eagle owl, barn owl, and rufouscheeked nightjar. The reserve has picnic and camping sites, whilst the caravan park is a good place to spot the ant-eating chat and familiar chat, both of which are quite tame.



## Klerksdorp Golf Course

This course is the oldest in the area once known as the Transvaal, having been established in the latter part of the 19th century. It is also one of the five-oldest courses in the country. It started as a nine-hole course made from a mixture of sand and used car oil, and is now a beautiful 18-hole course with rolling greens and fairways. The modern design only adds to its aesthetic appeal, and the course layout is such that it is suitable for beginners and pros alike.



## PC Pelsers Airport Airshow

The PC Pelsers Airport annually hosts an airshow that showcases military and civilian aircrafts as well as demonstrating the finesse it demands to pilot a craft in aerobatic display.



## PG Glass Vlakvark Trail Run

A tough scenic circular route through the Faan Meintjies Nature Reserve with gravel roads, jeep track, single track and through bush. Various game can be seen on the route with an abundance of antelope, giraffe and rhi



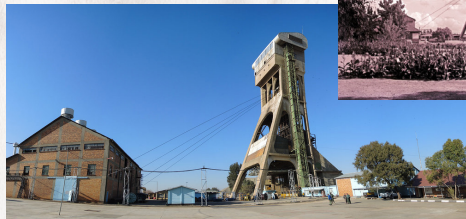


## Matlosana Water Festival

An important event on the national power boating calendar which attracts competitors and spectators from far and wide for the third last leg of the Formula 1 Power Boating Championships.

## Margaret Shaft

The Margaret Shaft was the first mine in the country to have concrete headgear erected. It also had a covered amphitheatre, serving as a multi-purpose centre where employees of the mine congregated for sports or social events.



## Klerksdorp Museum and Mine Tours

The Museum is housed in a sandstone prison building dating from 1891 that was built by the ZAR Department of Public Works on request of the local Klerksdorp authorities in reaction to the huge rise in crime rate after the discovery of gold in December 1885 and the gold rush that followed as of 1886. The person

tasked with designing the building was Sytze Wopkes Wierda (an architect who is even today famous in architectural circles, having been involved in countless government buildings and structure)



## Bosworth Farm Rock Engravings

A large rock engraving site with over 400 Bushman and Khoe herder rock engravings. The site is notable for the many depictions of human figures. Look out for the charging rhinoceros, the large elephant, the man and ostrich dancing, the flight of birds and the many geometric motifs. Bosworth also has many stone artefacts dating from over 1 million years ago.



## Boskop Dam Nature Reserve

The Boskop Dam Nature Reserve might be a little on the small side, but it is a regular haunt for locals in the area and highly cherished for the escape value factor it offers. Boskop Dam is a fishing destination of note, offers yachtsmen and canoeists the opportunity to cleave the surface of the water, and the Boskop Dam Reserve is home to a rare species called *Lithops lesliei*. Known as the Leslie



living stone, it is a group of almost stemless succulent perennials that look just like a stone.

## Dome Bergland Nature Park

The Dome Bergland Nature Park lies right on the border of two provinces – the North West and the Free State - 100 km south west of Johannesburg. Dome Bergland Nature Park (Vredefort) is a meteorite impact site dating back about 2-billion years. What makes it compelling as a place to visit is the obvious difference in vegetation and shape from the areas that surround it. The park lies just outside Potchefstroom and is an outdoor adventure centre offering hiking, mountain bike trails, canoeing, white-water rafting, mountain climbing, and abseiling. Visitors are often confused between the nearby Vredefort Dome and Dome Bergland Nature Park, but in fact Dome Bergland Nature Park is at the Vredefort Dome.



## North-West University Botanical Garden

The three-hectare North-West University Botanical Garden is home to mostly indigenous plants, if you discount the odd exotic plant here for either botanical or medicinal interest. The North-West University Botanical Garden has a number of functions that include conserving rare and endangered plants, providing practical material for the university's students, and the education of local communities about relevant environmental issues. The NWU Botanical Garden is managed by the School of Environmental Sciences and Development of the



North-West University and is a member of BGCI (Botanic Gardens Conservation International).

## Potchefstroom Golf Club

The course itself is one of the best-kept in the North-West, the grounds are in excellent condition year round and although generally flat in nature, the course is still regarded as one the finest tests in the area. Testimony to this is the fact that Potchefstroom Golf Course has twice hosted the South African Open with other large tournaments played annually. The eighteen-hole parkland course plays to a length of 6374m and offers a 5259m ladies tee option too. The fairways are grassed in Kikuyu and its greens, bent.



## Vredefort Dome

The Vredefort Dome (Crater) is currently the largest and one of the oldest known meteor impact sites in the world. It is South Africa's seventh World Heritage Site and this is largely due to the research scientist from Wits University, including Dr. Rodger Hart. The area displays exceptional scenic beauty and is rich in biodiversity with remarkable animal and plant populations. Various cultural features also add to the value of the area. The Vredefort Dome has an exceptional tourism potential, the Vredefort Dome is situated approximately 100 km from Johannesburg.



## Anglo-Boer War Memorial

It is a memorial stone at the corner of Visser and Jacobs Wilkens Streets. Names of soldiers who died during the Anglo-Boer South African War of 1899 – 1902 are inscribed on it.



## Eye of the Schoonspruit River

This site is situated 6km from Ventersdorp on the Koster road. It supplies water to Ventersdorp town. The water level stays constant, even during dry seasons. Also supplies water to Klerksdorp and Koster. It was from here that the first mineral water was bottled in South Africa



## Irish Soldier Monument/ Grave with Eternal Flowers

Situated on the left side of the old graveyard in town, it is under a huge tree next to the fence. Irish soldier executed by the British for fighting alongside the Boers. It is commonly known as the Grave with Eternal Flowers because of the fact that it blossoms throughout the seasons.



## Voortrekker Hall;

Built in the 1800s by Afrikaner soldiers, the Voortrekker Hall is an old building which is situated at the corner of Visser and Jacob Wilkens Streets next to the Anglo-Boer War Memorial. The building was previously used by the Afrikaner soldiers as a meeting venue and to hold other social events – to honour outstanding leaders and soldiers during the Anglo-Boer War. In 1995, the building was officially used as a Fire House and Ambulance place, under the supervision of Mr. J.P. Meyer who worked on his own until Mr. W. Van der Merwe, Mr. S. van der Merwe and Mr. S. Mtolo were employed to work with him. At the beginning the Fire Station used one Ford truck with a tank placed on a carriage.



# BOJANALA DISTRICT

## Hunters Rest Golf Course

Hunters Rest short golf course is great for golfers on a time budget, or for those that enjoy a faster pace. With breath-taking views of the Magaliesberg Mountain Range, and the added advantage of an excellent climate, the Hunters Rest Golf Course in Rustenburg is just about perfect.



## Rustenburg Golf Course

The Rustenburg Golf Course takes full advantage of its prime position in the foothills of the spectacular Magaliesberg Mountain Range. However, it is also placed within the town of Rustenburg, which is constantly growing thanks to its being home to some of the wealthiest platinum mines in the world. In 2012, the club upgraded from cynodon to bent grass, which has changed the whole feel of the game, and has added much value to any golfing experience here. The layout is such that golfers of any level will enjoy the course, but there are fair challenges for those wanting to test, practice and improve.



## Kgaswane Mountain Reserve

Kgaswane Mountain Reserve set in the hills above the town of Rustenburg, spans some forty-square kilometers of the Magaliesberg offering towering quartzite peaks and grassy vleis that allow visitors incredible views and some impressive hikes. Perfect for weekend hiking because of the easy access from

both Johannesburg and Pretoria, Kgaswane Mountain Reserve is littered with beautiful rock formations, streams that wend their way through valleys that give rise to a unique lush vegetation completely different from the surrounding veld or the rugged cliffs that are perfect for predators like the Cape vulture and Martial eagle.



### Vaalkop Dam Nature Reserve

Just 90 minutes from Johannesburg and 30 minutes from Sun City, the Vaalkop Dam Nature Reserve is relatively easy for both visitors to Johannesburg and Pretoria to reach, situated as it is 54 kilometers from Brits north-east of Rustenburg. Vaalkop Dam Nature Reserve is dominated by broken bushveld, a renowned area for both lovers of fishing and birds, and a lovely space in which to spend a day picnicking, canoeing or just gently idling away the time on the shore of the dam, spotting the bird life that includes exciting visitors like the acacia pied barbet, white-throated robin-chat, Marico flycatcher, and black-faced waxbill. The night veld is also alive with sound, if you stay at the camping site on the northern edge of the dam.



### Magaliesberg Biosphere Reserve

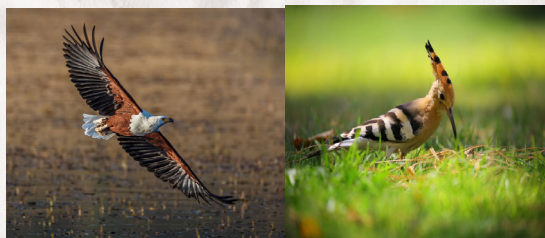
The Magaliesberg Biosphere Reserve is 360 000 hectares between Pretoria and Johannesburg in the east, and Rustenburg in the west. Around 262 000



people live within the biosphere. Formally registered by UNESCO in October 2015. It brings the number of biosphere reserves in South Africa to eight, out of 651 biosphere reserves in 119 countries around the world (more than 60 of them in Africa).

## Magaliesberg Birding

The Magaliesberg, its mountain and surrounds, is one of the most beautiful spaces for birds to live. It is no surprise that it is an IBA (an important bird area) and that 450 species of bird make the area home, including specials like the Cape vulture, black stork and white-backed night heron.



## Mountain Sanctuary Park

Mountain Sanctuary Park is aptly named, for it is every bit the restful and refreshing space in which to reconnect with nature it professes to be. One heads to Mountain Sanctuary Park to refresh the soul and re-invigorate one's sense of self. Mountain Sanctuary Park is a private nature reserve with an 'off the beaten track' approach to their offering. You will not find restricted and guided hikes and set routes, but rather the freedom to wander the wilderness in amongst clear mountain pools and rock formations.





## Pilanesberg National Park

The Pilanesberg National Park, which covers some 55 000 hectare, is the fourth largest in southern Africa. This malaria-free park is perched on the eroded vestiges of an alkaline volcanic crater - one of only three such craters in the world. Relish the ultimate in luxury accommodation in Pilanesberg when you stay at one of the opulent game lodges or tented camps, and enjoy a South African safari to remember. The 55 000 hectare Pilanesberg park opened in 1979 in one of the largest game resettlement projects in the history of South Africa.

## Black Rhino Game Reserve

Black Rhino Game Reserve is a more recent addition to the world-acclaimed Pilanesberg National Park in the North West Province of South Africa. Its incredible variety of plant life and landscapes make it the ideal natural habitat to some of the world's most exciting species of both predator and prey. This reserve is home to the Big Five; which is made up of the elephant, buffalo, leopard, lion and rhinoceros (both black and white).



## Borakalalo National Park

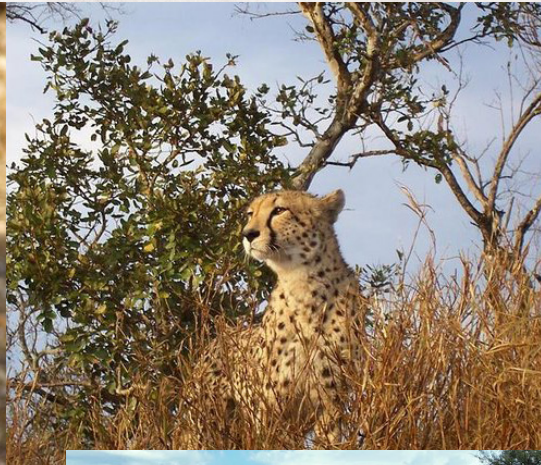
This park covers an impressive area of 13 500 hectares, which includes open scrubby bush and gorgeous woodlands. The Moretele River flows through the park and is flanked by forests that flourish on its waters. These different habitat types mean that the wildlife species that live in them are equally diverse.

This river leads to the Klipvoor Dam, and keen anglers will love spending the day sitting on the water's edge and trying their hand at catching carp, bream, barbel, and even the odd yellowfish. Thanks to the abundance of foliage and water, Borakalalo National Park is also home to more than 350 bird species. This birdlife includes rare species like the African finfoot and the white-backed heron, as well as several species of eagles and raptors.



## De Wildt Cheetah & Wildlife Trust

A captive breeding facility for cheetahs and other endangered animals, the The Ann van Dyk De Wildt Cheetah and Wildlife Centre lies in the foothills of the Magaliesberg, close to Brits and Hartebeespoort Dam.



## Gary Player Country Club

Located in Sun City, The Gary Player Golf Course is the measure, the standard and



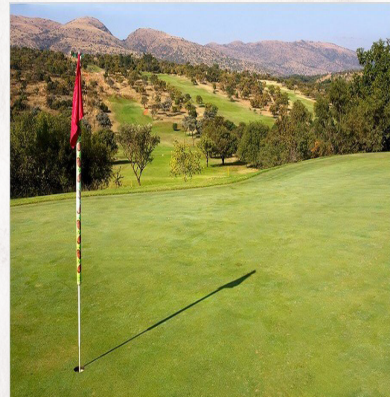
## TOURISM PRODUCTS

the very best golfing course in South Africa, if indeed not the entire African continent. The course has consistently outranked all other South African golfing estates since its inception in 1979 and has been host to the Nedbank Challenge since 1981. During this time every effort has gone into, not just its maintenance, but also regular improvements. Designed by Gary Player this parkland gem has wonderfully knitted kikuyu fairways and bent greens that run true.



### Seasons Golf Course

Originally called Brits Golf Club, Seasons Golf Course is situated on a stunning lifestyle estate that offers luxury against the backdrop of the beautiful North West Province. The Seasons Golf Course is open from Tuesday to Sunday all year round, and guests are welcome to join the regular members for a day on the greens and fairways. Tee times are welcome, for the convenience of the players.



### Lesedi Cultural Village

Lesedi, which is Sesotho for 'light', was initiated in 1995 as a tourist attraction and today features five traditional dwellings, each representing a South African culture: Pedi, Zulu, Xhosa, Basotho and Ndebele. Each of these families lives here permanently, looking after cows, chickens and tourists, and tours through their homes offer interesting cross-cultural comparisons



of the customs and social organization of the different cultures. There are two 3-hour tours, one in the morning and one late afternoon, which is definitely the more preferable because of the atmosphere the traditional singing and dancing session, held in the boma right at the end of the tour, creates at night.

## Lost City Country Club

Located in Sun City two hours from Johannesburg one of South Africa's favorite getaway destinations, and just over the hill from the Gary Player Golf Course, is another titan of the South African courses – the Lost City Golf Course. This masterpiece was sculpted out of the surrounding hills and rocky terrain by none other than Gary Player himself. Lost City is an 18-hole parklands course that plays to a mammoth 6983m, making at least certainly one of the longest courses you'll ever play on.



## Mankwe Dam

Mankwe Dam is the biggest body of water in the Pilanesberg National Park. Built by the farmers who originally owned the land, before it was incorporated into the reserve, it looks more like a lake than a dam. It lies virtually just off centre of the volcanic crater that is Pilanesberg, on the southern edge of Hippo Loop (a good area in which to spot game, particularly hippo, but often lion as well as they use the area to hunt).



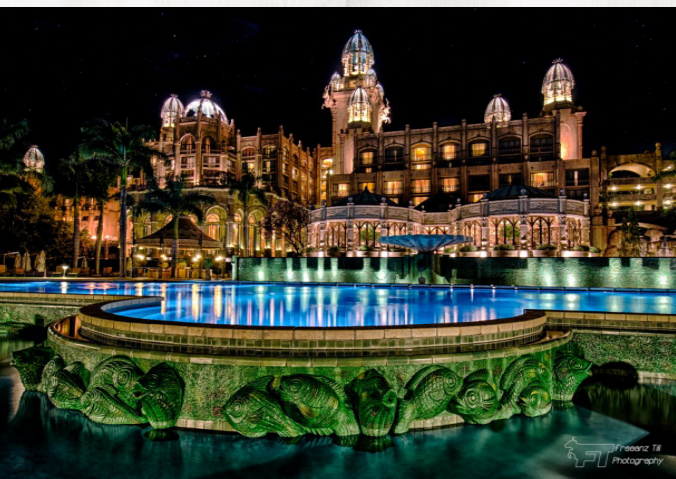


## Margaret Roberts Herbal Centre

Margaret Roberts in Broederstroom is a brand that has long been associated with herbs, tinctures, herbal, food and health products in South Africa. The Margaret Roberts Herbal Centre encompasses everything that Margaret herself is passionate about, from the impressive herb gardens, the cosmetic, medicinal, fragrance and kitchen gardens - through to the apothecary, nursery, tea garden, labyrinth and chapel. A shop on the premises in Hartebeespoort Dam supplies visitors with all their favorite Margaret Roberts goodies, including cosmetics, bath products, herbs, spices and condiments. Enjoy a relaxing lunch at The Country Kitchen, which serves gourmet coffees, light lunches and tea - and their famous geranium-

## The Palace of The Lost City

The Palace of The Lost City at Sun City - situated on the world famous Sun City Complex and voted one of the top hotels - surely, one of the most extraordinary hotels in the world. Set in the North West Province, 166km north west of Johannesburg, and adjacent to South Africa's 3rd largest game park - The Pilanesberg.



## Sun City Resort

Home to the Valley of Waves and sprawled along the border of the Pilanesberg National Park, Sun City Resort enjoys the fine distinction of being the only surf-and-safari destination within a two-hour drive of landlocked Johannesburg. Make it a beach day on the palm-fringed shore of the Roaring Lagoon or discover the ruins of a mythical civilization at the Maze of the Lost City. Embark on a Big Five safari into the heart of the African bush, or above it, in a hot-air balloon when you stay at Sun City in the Pilanesberg. Improve your golf handicap at two world-class golf courses, which include the Gary Player Golf Course and the Lost city Golf Course. Find your groove on the dance floor at Encore, or find your fun at Sun Central where two levels of action-packed, family entertainment venues give you even more great things to do at Sun City.





# CONTACT DETAILS

| Department/Municipalities   | Website  | Telephone                      |
|---|--|--------------------------------|
| Department of Economic Development, Environment, Conservation & Tourism | <a href="http://www.nwpg.gov.za">www.nwpg.gov.za</a>                       | 018 388 5965<br>018 388 5966   |
| DEDECT Regional Office: Ngaka Modiri Molema                             | <a href="http://www.nwpg.gov.za">www.nwpg.gov.za</a>                       | Lydia More<br>072 533 7189     |
| DEDECT Regional: Dr. Ruth Mompoti                                       | <a href="http://www.nwpg.gov.za">www.nwpg.gov.za</a>                       | Khotso Lethoba<br>082 576 6320 |
| DEDECT Regional Office : Dr. Kenneth Kaunda                             | <a href="http://www.nwpg.gov.za">www.nwpg.gov.za</a>                       | Lilly Mosiane<br>082 508 8286  |
| DEDECT Regional Office: Bojanala (Rustenburg)                           | <a href="http://www.nwpg.gov.za">www.nwpg.gov.za</a>                       | Lucia Sebegoe<br>072 413 2277  |
| DEDECT Regional Office: Bojanala District (Madibeng)                    | <a href="http://www.nwpg.gov.za">www.nwpg.gov.za</a>                       | Locky Monaledi<br>066 405 5302 |
| North West Tourism Board (Marketing Unit)                               | <a href="http://www.tourismnorthwest.co.za">www.tourismnorthwest.co.za</a> | 018 397 1500<br>018 386 1133   |
| Ngaka Modiri Molema District Municipality (LED/Tourism Unit)            | <a href="http://www.nmmdm.gov.za">www.nmmdm.gov.za</a>                     | 018 381 9400<br>018 381 9404   |
| Dr Kenneth Kauda District Municipality (LED/Tourism Unit)               | <a href="http://www.kaundadistrict.gov.za">www.kaundadistrict.gov.za</a>   | 018 473 8000<br>018 473 8056   |
| Bojanala District Municipality (LED/Tourism Unit)                       | <a href="http://www.bojanala.gov.za">www.bojanala.gov.za</a>               | 014 590 4600<br>014 590 4502   |
| Dr Ruth Segomotso Mompoti District Municipality (LED/Tourism Unit)      | <a href="http://www.drrsmompatidm.gov.za">www.drrsmompatidm.gov.za</a>     | 053 928 6400<br>053 928 6462   |



